



Theta Kite

Alpha Chi Chapter of Kappa Alpha Theta • Established at Purdue University in 1915 • Spring 2026

Kate Hanley: From Chapter President to FCB Co-President to Collegiate Operations Specialist for Kappa Alpha Theta

Kate Hanley '18 began her work life after graduating from Purdue as a third grade teacher in the Chicago Public Schools. While she loved the kids and the job, she eventually decided to find a position that better used the abilities and knowledge she had gained in Theta leadership positions while at Purdue.

"I love education and the kids were amazing, but I wanted a change and to use my skills in another way," Kate says. "When I saw that Kappa Alpha Theta was hiring, I decided to give it a try."

Kate now serves as a Collegiate Operations Specialist at Theta headquarters. In this position, she travels to chapters around the country to check in with their operations. She helps collegiate officers feel supported and understand the scope



Abby Hanley '14 with her sister Kate Hanley '18



Kate Hanley (third from left) and her Kappa Alpha Theta colleagues at t-shirt bid day at the newly reestablished University of Michigan chapter

and expectations of their positions. As part of her assignment, Kate helped with the reestablishment of Theta chapters at the University of South Carolina and the University of Michigan.

"It has been so rewarding to visit chapters to help them learn more about operations within a Theta chapter," Kate says.

In retrospect, Kate received the per-

fect education and experience for this job while she was an undergraduate at Purdue. During her freshman year, she participated in Future Greek Leaders and was on the Membership Development Committee. In her sophomore year she served as Vice President of Administration (VPA). As a junior she was elected

Continued on page 11.

Alpha Chi Chapter Welcomes New Advisory Board Chair

Chapter says "Thanks" to long-time co-chairs

Taylor Hoftiezer '15, has taken over as the chair of the Advisory Board (AB) for the chapter replacing **Brandi Bennett Burke '00**, and **Maggie Wolfred Hammack '04**, who have served as co-chairs since 2012.

The AB guides chapter officers on operations, risk management and compliance with fraternity laws, while providing feedback, overseeing finances and attending meetings and events when possible.



Taylor Hoftiezer '15

As Taylor begins work, she is looking for two advisors with specific experience: a facility management advisor and a recruitment advisor. If you are interested in serving in either of these positions, please email Taylor at tmhoftiezer@gmail.com.

Thank you Brandi and Maggie for your years of service and welcome Taylor!

Zoe Coulson Scholar Award



Diya Ambat '24 (left), Academic Development Director, presented the Zoe Coulson Scholar Award to **Vanessa Prodafikas '23** (right), a junior from Canton, OH. Vanessa had the most improved GPA in the chapter for the Fall 2025 semester.

The award is named in honor of **Zoe Coulson '51**, a Purdue 150 Most Influential Graduate, who was a trailblazer in business and inspiration to many Alpha Chi Thetas during the 1970s and beyond.

Plus Four!

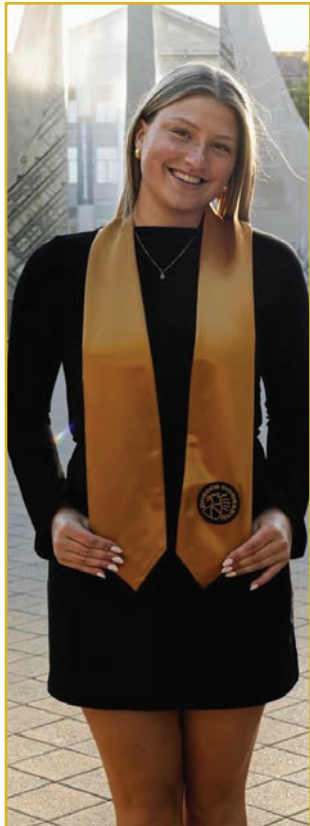


Welcome to four Spring members, from left, Anna More, Indianapolis; Gracie Dornenet, Lafayette; Josie Fritch, Roanoke, IN and Kaydence Fleck, Noblesville, IN.

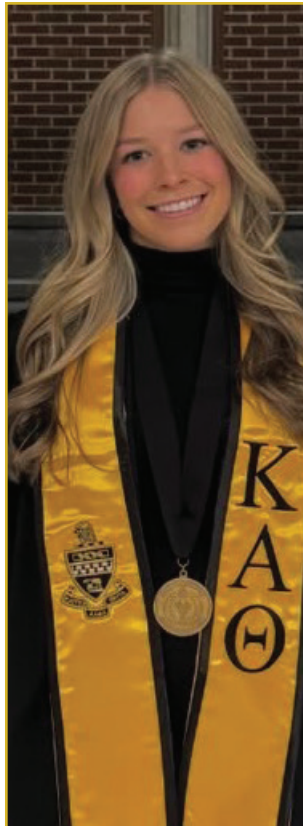
2025 December Graduates!



Piper Longest



Allie Hirzel



Maci Fohl

Congratulations to three members, Piper Longest, Allie Hirzel and Maci Fohl, who graduated in December and became Kappa Alpha Theta alumnae!

STAY CONNECTED!



purduetheta@gmail.com



[@purduetheta](https://www.instagram.com/purduetheta)



[KappaAlphaTheta-AlphaChiChapter](https://www.facebook.com/KappaAlphaTheta-AlphaChiChapter)

Chapter Invited to Help with University of Michigan Chapter Recolonization

Members lead on campus and beyond



"Theta Pop" was the theme for the Fall philanthropy in support of CASA of Tippecanoe County



Over Valentine's Day, Alpha Chi Thetas were invited to the University of Michigan/Eta chapter to help recruit the first member class of the chapter in ten years. Members pictured participated in the preference round of recruitment.

Spring semester is in full bloom at the 607! We have had an exciting and busy semester as Alpha Chi Thetas stay involved with countless organizations across campus. We are continually growing in our sisterhood and can't wait for the rest of the excitement this semester will hold!

On January 24 we celebrated Founders' Day with a yummy lunch, prepared by our talented chef Tobin, and a service honoring the women who established our beloved KAθ. We were elated to welcome back many alumni, including **Marty Hudlow MC 1946**, an 80- year Alpha Chi Theta and to hear from Indiana State Representative **Sheila Johnston Klinker**, who was initiated at Butler University in 1957, but graduated from Purdue.

Alpha Chi Thetas never cease to amaze me with their commitment to the four points of the Kite, but especially their drive to pursue intellectual curiosity. Their hard work is evident in the time and effort I see my sisters pour into their school work week af-

ter week. For the Fall '25 semester, our house average GPA was 3.46. I am incredibly proud of my sisters and cannot wait to see what we are able to accomplish this semester.

Not only are Alpha Chi Thetas committed to their academics but prioritize being involved with our campus and community. I am continually impressed and inspired by the leadership my sisters choose to pursue in their endeavors. A few examples are **Reagan Koester '23** as she is currently serving as the student trustee to the University, **MaryCate Munn '23** is serving as the president of A Kid Again Purdue, and **Lauren Kish '22** is serving as the president of Purdue Mortar Board. This is just a glimpse of the leadership development I have the opportunity to watch everyday.

On Valentine's Day, we were invited to perform our preference ceremony at the University of Michigan to help reestablish the Eta chapter of Theta. Alpha Chi Thetas joined forces with Ohio Northern University to re-

cruit the first Eta member class in ten years. We were honored to help with this process and delighted to grow our sisterhood.

Thanks to our Fundraising Director, **Ella Henry '24**, and Vice President of External Affairs, **Jada Clevenger '24**, we have hosted several dine-to-donate events at local restaurants to raise money for CASA and the Alpha Chi Chapter Educational Foundation. After the success of Theta Pop in the Fall and CASA Carnival last Spring, we are looking forward to our two philanthropy events this spring, Pie a KAθ and our second annual CASA Carnival.

I cannot express how blessed I feel to lead such an inspiring group of women. I can't wait to discover what more we have in store here at the 607!



Loyally,
Jessie Bradley '24
Chapter President

Final HVAC Work This Summer

New food service is a game-changer!

As the Spring 2026 semester at Purdue winds down and we leave snow days behind, things at the Alpha Chi house are looking better than ever. It's been a busy and productive year, and honestly, the energy among the members has been great. We've seen a lot of accomplishments across the board, and the house itself has undergone some pretty significant changes to keep up with everyone's needs.

One of the biggest wins this year was switching over to a new food catering company, Rosemary Food Service. It has been a total game-changer for the facility. The service is stable, and the food is consistently fresh and healthy. The best part is that the members actually have a say in the menu; being able to give input on what's being cooked has made a huge difference in how much the girls enjoy dining at the house. It's turned into a very successful partnership!



Snow days may be over, but the heavy snow allowed members to have some fun in the patio

Looking ahead, we aren't slowing down just because the semester is ending. As soon as the house closes in May, we're jumping straight into summer projects. The main priority is finishing up the HVAC project. Once this final phase is done, the entire house will have a fully updated system, which is a massive milestone.

We want to give a huge shout out to the FCB summer projects team for all their hard work as they've been grinding to make sure this gets across the finish line. The team includes 1971 pledge sisters **Cindy Spradling Mendenhall** and **Sarah McKinney Cantwell** with the great help from House Director **Rita Zawisza**.

We're looking forward to closing out another strong semester here at 607 N. Russell and getting the house ready for the Fall.

Loyally,
Kate Hanley '18 and Megan Ricks '12
Co-Presidents



Eliza Gaskill and Team Place Third in Motor Sports Competition

Eliza Gaskill '22, a senior in mechanical engineering was part of a team of female engineering students who won third place in a national competition at the Women With Drive Summit hosted by Women in Motorsports North America. The challenge was to develop strategies to increase women's engagement in motorsports.

The team entered what they thought was an engineering competition, but according to Eliza, "I don't think any of us realized it was a business competition, but being some of the only engineers there, we decided to leverage our technical expertise and skillset."

"Our passion for motorsports in general really gave us an edge," said Gaskill. "All of us are involved in motorsports and we understand the industry differently than others."



Eliza Gaskill (far right) was a member of a team of female Purdue engineers who won third place in the Women With Drive Summit

The group earned third place and won a \$1,000 scholarship.

"I gained a lot from this experience," said Gaskill. "Even getting more

exposure to the motorsports industry and the chance to network was invaluable."

Dad's Weekend: Fun for Dads and Daughters



Thetas with their dads, from left: Ashley Liebrum, MC '23, Ella Robinson, MC '24, Ella Gaerte, MC '25, Alexandra Garland MC '23 and Olivia Bartek MC '24

Dad's Weekend was held November 7, 2025. Theta dads and their daughters spent time at the Alpha Chi Chapter house eating dinner and watching Purdue basketball defeat the Oakland Golden

Grizzlies 87-77 on the big screen in the Great Room!

The following day, Theta families tailgated for the Purdue football game against the Ohio State Buckeyes,

unfortunately ending in a Boilermaker loss with a score of 34-10.

The Dad's Weekend sheet sign was painted by **Charlotte Greer (MC '23)** to celebrate the weekend!

Hot Off the Press! Kappa Alpha Theta Earns "Chapter of the Year" for Panhellenic Organizations

On April 4 during Purdue's Fraternity, Sorority and Cooperative Life's Awards banquet, Alpha Chi Chapter was awarded "Chapter of the Year" for 2025 among all the Panhellenic organizations.

The Award was based on scholarship, philanthropy, leadership and campus involvement of members.



Attending the ceremony was Past Chapter President **Olivia Kinney**, current President **Jessie Bradley**, VP Administration **Addison Duncan** and Alumnae Relations Director **Ava**

Kinney.

Congratulations to the chapter for their outstanding work.

Help Us Reunite with "Lost" Thetas

We have a list of 175 Thetas who are marked "lost" in our database and are not receiving the Kite newsletter.

Please visit alphachithetas.org review the list of "lost" alumnae and let us know if you have a current address or email for anyone on the list.

Email information to **Cindy Shaffer Thoennes '79**, our chapter's Alumnae Contact Officer, at cthoennes@kappaalphatheta.org.

Thank you!

Twenty Scholarships Were Awarded at Mom's Weekend

2025 was another good year financially for the Educational Foundation. Thanks to the generosity of Thetas, their family members and friends, donations totaling \$73,041 were received from seventy-four donors. The value of the named endowments invested with Morgan Stanley increased by 16.1%, and the number of Second Century Club members grew to 32 members.

With these impressive numbers, the Ed Foundation was able to fulfill its two-fold mission of awarding scholarships and awards to the young women of the Alpha Chi Chapter and making educational improvements and upgrades in the chapter house.

In April, during Mom's Day festivities,

20 scholarships of \$1,500 each were presented to 20 deserving Alpha Chi Thetas. In addition, each semester the Zoe Coulson Award is given to the active with the most improved GPA. Each recipient receives a \$250 check along with a frameable certificate. The Munson Award for Excellent Leadership was also presented.

It was apparent that more study space was badly needed in the chapter. Over the summer, the Ed Foundation made the parlor more study-friendly by adding study tables, reupholstered chairs, and improved lighting. The actives loved the upgrade and responded with thirty women achieving 4.0's, 87 girls made the Purdue Dean's List. The Ed Foundation is a small board and has a maximum of 10

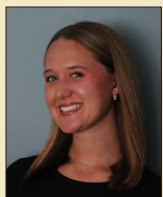
voting members. Members are elected by the board and serve a three-year term with the possibility of serving an additional three-year term. Two of our members will complete their service this fall.

If you are interested in serving with us, please contact me or another member of our board for information. We meet virtually so members can live anywhere. A chance to positively impact the lives of young Purdue Thetas is guaranteed!



Loyally,
Marilynn Bottomley
Dammon '66
President
marlynndammon@gmail.com

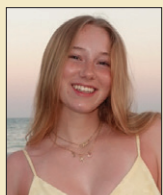
Congratulations Scholarship Recipients



Hannah Barbee '23
Biomedical Health Sciences
*In honor of Bonnie Rabe Vinovich '59
by the John W. Anderson Foundation*



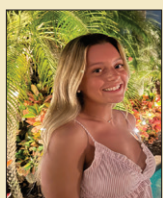
Marleigh Fowler '24
Nursing
*Susan Dalenberg Kessler '60
Endowed Scholarship*



Jessie Bradley '24
Atmospheric Science/Meteorology
*AX Chapter and its support of the
Alpha Chi Chapter Educational Foundation*



Grace Hardebeck '24
Biomedical Health Sciences
*Endowed Scholarship in memory of Cortney P.
Stegemann by Nancy Bange Kennedy '69 and her Theta
sisters*



Marlo Cornn '23
Biology
*Endowed Scholarships in memory of
Katie Wood McMillin '48, Carole Wood Gorenflo
'73 and Mary Ellen Binney Lovell '50*



Leah Hartwell '23
Biomedical Health Sciences
*Endowed Scholarship in memory of Lindy Baugh '70 by
Theta sisters, family and Katie Baugh Nielsen '69*



Addison Duncan '24
Animal Sciences
*Endowed Scholarship in memory of June Bode
Dorman '51 and Endowed Scholarship by the
McKinney Family*



Meghan Haws '24
Agricultural Communication
*Endowed Scholarship in memory of Lindy Baugh
'70 by Theta sisters, family and Katie Baugh
Nielsen '69*



Lucy Floyd '24
Neurobiology & Physiology
*Scholarship in memory of Kelley Hudson '04
by Sarah Arthur Murphy '04 and the Class of '04*



Peyton Henney '23
Nursing
*Scholarship in memory of Carolyn Norman
Hibbeln '59 by her Theta sisters and Ann Cummins
Daniel '60*

Second Century Club Members

A sincere thank you to these members of the Second Century Club of the Alpha Chi Chapter Educational Foundation who have contributed \$500 or more in the last year.

John W. Anderson Foundation
 Patricia Baugh
 Jacqueline Maynard Bayer '65
 Mary Lincoln Campbell '64
 Marilynn Bottomley Dammon '66
 Ann Cummins Daniel '60
 Pamela Beck Danner '68
 Janet L. Dinsmore '67
 Tricia Ellis Eckel '64
 Peggy Fawcett Edwards '69
 Robert L. Griffiths
 Nancy Bernet Haase '70
 Patsy Habicht '68
 Sally Berner Hanley '58
 Hanley Family Fund
 Francie Grannan Hinds '71
 Nancy Bange Kennedy '69

Thomas and Lorie Larson Land '76
 Carol Land McCarthy '71
 Judy Kirkpatrick McKinney '51
 Dody Ward Mertz '56
 Ann Fawcett Murphy '72
 Katie Baugh Nielsen '69
 Kellie Applegate Prusiecki '79
 JoEllen Alshouse Reed '71
 Selita Smith Reichart '70
 Kathy Walker Schneidwind '69
 Linda Markins Sorensen '60
 Ruthie Crane Utti '62
 Ellie Wang '70
 Marcia Erickson Weber '63
 Joan Wheatley '71

All donations are as of 4/1/2025 – 3/31/2026

Sisters Remember

Lindy Baugh

22 donors added over \$12,000 to the fund

The Educational Foundation would like to thank the 22 Theta sisters and family members of **Lindy Baugh '70**, who donated over \$12,000 last year to the fund.



This, along with a generous \$18,400 donation from the Snyder Family Endowment, increased the annual scholarships from two to three and allowed for funds in the endowment to grow for future scholarships.



Ella Henry '24

Biomedical Health Sciences
Endowed Scholarship by Anne Sorensen Inman '87 and Linda Markins Sorensen '60



Ava Kinney '24

History & Communications
Endowed Scholarship in memory of Crystal Ruskin Benbow '58 by Bob Benbow



Maya Knies '24

Interior Design
Endowed Scholarship in memory of Carol Straley Trimmer '62 by the Class of '62 and Joe Trimmer



Ella Kuykendall '24

English Literature and Professional Writing
Jackie Maynard Bayer '65 Endowed Scholarship



Ripley Merritt '25

Biomedical Health Sciences
Endowed Scholarship in memory of Connie Corson Griffiths '60 by Bob Griffiths



MaryCate Munn '23

Selling/Sales Management and Retail Management
Endowed Scholarship in memory of Lindy Baugh '70 by Theta sisters, family and Katie Baugh Nielsen '69



Ella Riordan '23

Marketing and Entrepreneurship
Mary Lincoln Campbell '64 Endowed Scholarship



Mylie Roberts '24

Communication and Business
Endowed Scholarship by the Class of '64, "The Dappers" and by Patsy Habicht '68, in memory of Pam Habicht Rudy '64



Caroline Schmidt '24

Construction Engineering and Management
Endowed scholarships in memory of Jim Dammon and Bob Sorensen by Marilynn Bottomley Dammon '66 and Linda Markins Sorensen '60



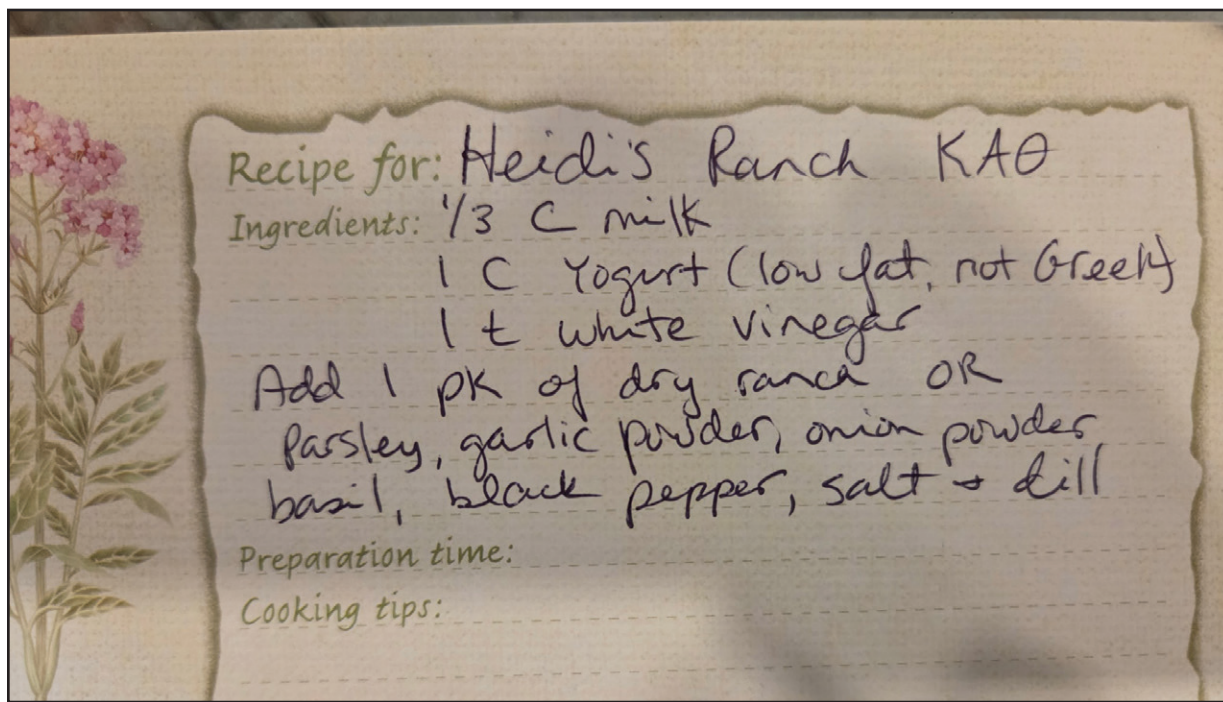
Clare Sullivan '24

Biomedical Health Sciences
Sally Berner Hanley '58 Endowed Scholarship. In honor of Sally and her Purdue Theta granddaughters - Abby, '14, Madison '17, Kate '18, and Susan '25

Ranch Dressing Facebook Post Garners Fond Memories of the 1990s and 2000s

An Alpha Chi Chapter Facebook post by **Julia Costin Maurek '97**, brought to life the memories of many Thetas who lived in the house when "Heidi" was the chapter cook and her ranch dressing recipe was beloved.

Julia's memories prompted her post, "...my kids find hilarious the stories of Heidi's ranch - especially the vitriol of 90 women when her ranch wasn't available. And they [my kids] found this ornament for me for our tree this year."



According to **Stepanie Agan McNamara '95**, Heidi became Theta's cook in 1995 after a reorganization in the Zeta Tau Zeta house. Not much is known now about Heidi, or how long she stayed as the Theta cook, but what is known is the wide range of memories of her dressing. Here are a few:

Allyson Boehning Olsen '10: "Meals revolved around Heidi's

ranch! My personal fave - a bread bowl dipped in ranch. Lol. Delish."

Jen Draper '97: "What didn't we dip in that ranch? Even pasta."

Jessica Moore Satlow '99: "OMG...E-VER-Y-THING!"

Dani Scheler Kulp '02: "Heidi's ranch, I put that sh*t on everything! I miss it!"

Carrie Schmahl Vonderheide '94: "I still dream about her ranch...25 years later!"

Misti Phillips James '96: "Drizzled on everything!"

she add[ed] the following but I don't have how much for each. Parsley, Garlic powder, onion powder, basil, black pepper, salt and dill. I hope this gets us close. Enjoy!"

And the discussion turned to Heidi's cinnamon butter:

Jody Englehart Carteaux '94: "I only lived in the house 2 years, but I will never forget the cinnamon butter in the mornings and the ranch we would hoard for when ordering pizza late at night. She was the sweetest! I feel like we loved Heidi like

Amy Jacobsen Thomas '97: "She [Heidi] also told me that cottage cheese was one of the ingredients."

Carrie Hanas Bachman '95: "All right ladies. This is written down from Heidi. Not exact but we should be able to recreate. 1/3 milk, 1 cup yogurt, It was low fat yogurt, not [G]reek. 1 teaspoon of vinegar. (White vinegar? I think) You could use a ranch dry packet for seasoning if not

a Grandma."

Jen Dannemann Ferency '95: "I was JUST telling my parents about her ranch and also her amazing cinnamon butter that we put on everything! SO GOOD."

Thanks to Jen and Carrie, for Heidi's ranch dressing recipe (pictured above).

Traveling Thetas



Winter travels turned into time for a reunion in Florida for, from left to right, Ericka Kennedy Dawson '96, with her mother Nancy Bange Kennedy, '69, Anne Littlefield Young '69, Elaine Rush Haehl '69 and Ginny Rish Antrim '69



During a week in Cabo San Lucas, 1970 pledge sisters Kathy Bache Miner (left) and Susan Bilyeu Crisler (right) were at dinner with their husbands when a performer asked if anyone was celebrating a special occasion. Kathy's husband said, "These two are celebrating over 50 years of friendship." The singer then dedicated and sang to Kathy and Susan "What a Wonderful World."

Kathy then said, "...And I said to myself, what a wonderful world."



Remembering Sisters Who Have Recently Passed

Lorene McCormick Burkhart

Initiated 1953

Deceased February 2026

Nancy Burchell Combs

Initiated 1949

Deceased February 2025

Sara Parr Corley

Initiated 1955

Deceased March 2026

Patricia Mann Duckworth

Initiated 1976

Deceased November 2025

Judy Sargeant Lockett

Initiated 1952

Deceased January 2026

Sally Ashbaucher McIveen

Initiated 1951

Deceased December 2025

Betty Ritter Siefert

Initiated 1951

Deceased September 2019

Founders Day



Ava Kinney '24, Alumnae Relations Director co-chaired Founders Day for the chapter and alumnae.



Alumnae attending were, from left to right, Linda Markins Sorensen '60; Marilyn Bottomley Dammon '66; Marcia Erickson Weber '63; Beverly Beck McCollough '55; Marty Schroyer Hudlow '46; Ellie Wang '70, a co-chair of the event; Katie Baugh Nielsen '69; Judy Bernet Evans '64 and Laura Hardy Noel '87.

Every year, Alpha Chi Thetas, their family and friends make donations to the Alpha Chi Educational Foundation In Memory Of or In Honor Of beloved sisters. These gifts, from 4/1/2025 to 3/31/2026, enable named and endowed scholarships and important educational improvements in the chapter house.

Thank you for honoring our sisters and their family members with your donation.



In Honor Of

Jackie Maynard Bayer '65 Julia Kirkpatrick McKinney '51, Karen '78
The Class of '80 (Delta Sigma/Ball State) and Amy '07
Abby '14, Kate '18 and Susie '25 Hanley Linda Markins Sorensen '60
Carol Land McCarthy '71 Bonnie Rabe Vinovich '59



In Memory Of

Lindy Baugh '70
Beth Madsen Ciesar '58
Sue Leaming Davis '57
Connie Corson Griffiths '60
Bill Hanley
Carolyn Norman Hibbeln '59
Meredith (Bee) Hunt Horner '51 (Beta/Indiana)
Lois Bean Menefee 1923
Marian Crane Poole '30
Pam Habicht Rudy '64
Cortney P. Stegemann
Carol Straley Trimmer '62
Amy Wright, '84

Class of 1965 Reunion News

Members of the class of 1965 are planning a reunion to celebrate turning 80 and invite all turning 80 to share in the celebration.

It will be a fun Fall weekend, September 18-20, at Purdue. "Save the Dates" with details are going out in April.

Contact: Barbara Allen Berling, berling11@gmail.com for more information.



WAYS TO DONATE

Donate Online



Scan the QR code above or visit alphachithetas.org/donate

Mail a Check



Mail a check to Alpha Chi Chapter Educational Foundation, PO Box 3754, West Lafayette, IN 47996-3754

The Alpha Chi Educational Foundation is a 501(c)(3) not-for-profit organization where donations are tax deductible.

Use Your RMD to Donate - It's a Win-Win



Many of us must take a Required Minimum Distribution (RMD) from our retirement accounts. Please consider a contribution from this source.

Kate Hanley

Continued from page 1



Preference round at University of Michigan, from left Alpha Chi President Jessie Bradley, Kate Hanley and Alpha Chi VP of Membership Vanessa Prodafikas



Kate Hanley, top right, with the executive team during her term as president of the Alpha Chi Chapter

president of the Theta chapter.

As an alumna, she has served for three years as the co-chair of the Facility Corporation Board (FCB) working with the chapter's executive team, the FCB board and the house director to ensure the safety and security of the chapter house and the active members.

"Being president of the Purdue chapter changed my life and allowed me to learn so many things about myself and how to be a leader," Kate says. "I use the skills and relationships I gained during that role every day now and I am so thankful for it."

Kate attended Purdue during the Covid-19 pandemic, which profoundly influenced her experience there.

"I was VPA at the start of Covid and then I was president as we were returning to campus in the fall of 2020," she

explains. "So I was part of the Covid Team that collaborated with the FCB to ensure the safest return for our members that year. During this time, I was in charge of making sure members were following the expectations put in place by the Covid Team. I learned a lot about logistics, operations, teamwork and the need for a strategic plan within an organization."

In her present position at Theta national headquarters, Kate is pleased to be able to use the skills she developed during that difficult time to give support to other Theta chapters. "Theta has so much history and I am proud to be a small part of it," she adds.

Kate has deep Purdue Theta roots. Her grandmother, **Sally Berner Hanley '58**, and her twin sister **Sue Berner Eibel '58**, were Alpha Chi Thetas, as was Kate's

sister, **Abby Hanley '14**. More recently, Kate's older cousin **Madison Hanley '17**, was in the chapter and her youngest cousin, **Susan Hanley '25**, joined this past fall.

With so many Theta family connections and Theta friends from all phases of life, Kate has enjoyed a variety of special experiences. She recently appreciated the opportunity to officiate in a wedding of a Theta sister and the honor of being an "aunt" to another Theta sister's children.

"Kappa Alpha Theta has given me so much and continues to give me so much," Kate says. "My Theta family members and close Theta friends have taught me how to get involved and how to give back to what gives to you. That is why I am so passionate about being involved with Theta past my college years."

Theta Kite

Alpha Chi Facility Corporation

P.O. Box 2164

West Lafayette, IN 47996

Return Service Requested



Zoom Available for Pledge Class Reunions

The FCB's Zoom account is available to any pledge class or group of sisters who would like to hold an online reunion.

Email purduetheta@gmail.com with a date and time requested.



Follow the active chapter on Instagram: @purduetheta

Follow alumnae on Facebook: KAO - Alpha Chi Chapter



The Kite Team

Editor

Ann Fawcett Murphy '72

Featured Writer

Kay Kenady Sanger '62

Copy Editors

Linda Markins Sorensen '60

Peggy Fawcett Edwards '69

Advisors

Laura Hardy Noel '87

Stephanie Agan McNamara '95

Marilynn Bottomley Dammon '66

Linda Markins Sorensen '60

Kate Hanley '18

Comments and suggestions, send to: purduethetas@gmail.com



Recent Grads: Keep in Touch

Update your emails and contact information!

When purdue.edu email addresses expire, we lose track of Thetas.

Please keep your email and addresses current so you can continue to get news about the Alpha Chi Chapter.

Submit change of contact information to **Cindy Shaffer Thoennes '79**, Alpha Chi Chapter Alumnae Contact Officer at cchoennes@kappaalphatheta.org.